



PORTLAND'5  
**KELLER**  
AUDITORIUM

## Technical Information

1111 SW Broadway  
Antoinette Hatfield Hall  
Portland, OR 97205-2913  
Main: 503-248-4335  
Fax: 503-796-6507

**Back of House: [production@portland5.com](mailto:production@portland5.com)**  
**Front of House: [eventsFOHadvance@portland5.com](mailto:eventsFOHadvance@portland5.com)**

**Please Note:**

The Keller Auditorium does not have a standard “house hang” installed for lighting, sound or soft goods. The configuration of these elements are arranged per event.

Although every effort has been made to accurately reflect the equipment available, some equipment may not be available at the time of your performance. Use of some equipment may result in additional costs.

# TABLE OF CONTENTS

General Information.....	3
Management .....	7
Load-In Area.....	9
Carpentry.....	11
Lighting.....	15
Sound and Video.....	18
Props .....	24
Wardrobe.....	26

# ATTACHMENTS

Map of Theater Location .....	A
Ground Plan .....	B
Section.....	C
Line Set Schedule .....	D
Photos of Stage and House.....	E
Seating Chart.....	F
FOH Mix Position Detail .....	G
Policies .....	H

# General Information

## **Address**

Keller Auditorium\*  
222 SW Clay Street (between SW 2<sup>nd</sup> and 3<sup>rd</sup> Avenues)  
Portland, OR 97201-5812

\*Please note the Keller Auditorium is not always open to receive packages and/or mail. We encourage senders to use the mailing address at our Administrative Offices, providing the name of the event on the parcel:

## **Mailing Address**

**(Name of Event) c/o Portland'5**  
1111 SW Broadway  
Portland, Oregon 97205-2913

## **Time Zone**

Oregon is in the Pacific Time Zone (UTC/GMT -8) and observes Daylight Savings Time.

## **Event and Production Services (Back of House and Front of House)**

For Back of House, please use: [production@portland5.com](mailto:production@portland5.com)

For Front of House, please use: [eventsFOHadvance@portland5.com](mailto:eventsFOHadvance@portland5.com)

## **Programming and Booking**

Director of Booking and Sales  
Heather Wilton  
503-274-6568  
[HeatherWilton@portland5.com](mailto:HeatherWilton@portland5.com)

## **Box Office**

Director of Ticket Services  
Stephanie Viegas Dias  
503-274-6598  
[StephanieViegasDias@portland5.com](mailto:StephanieViegasDias@portland5.com)

## **Catering**

General Manager, Levy  
Dave Woodman  
503-731-7952  
[Dwoodman@levyrestaurants.com](mailto:Dwoodman@levyrestaurants.com)

## Area Hotels

### **The Hotel Zags**

515 SW Clay St.  
Portland, OR 97201  
503.484.1084  
www.thehotelzags.com

### **The Heathman Hotel**

1001 SW Broadway  
Portland, OR 97205  
503.241.4100 or 800.551.0011  
www.heathmanhotel.com

### **Hotel Vance**

1455 SW Broadway  
Portland, OR 97201  
503.334.2167  
hotelvance.com

### **Portland Paramount Hotel**

808 SW Taylor St.  
Portland, Oregon 97205  
503.223.9900  
www.portlandparamount.com

### **Portland Marriott Downtown Waterfront**

1401 SW Naito Pkwy  
Portland, OR 97201  
503.226.7600  
marriott.com

## Restaurants

### **ArtBar and Bistro**

Located in Antoinette Hatfield Hall  
1111 SW Broadway  
Portland, OR 97205  
503-432-2905  
portland5.com/artbar

### **Higgins**

1239 SW Broadway  
Portland, OR 97205  
503-222-9070  
higginsportland.com

### **Southpark Seafood**

901 SW Salmon St.  
Portland, OR 97205  
503-326-1300  
southparkseafood.com

### **Swank Restaurant,**

### **Swine Moonshine & Whisky Bar**

Located in the Paramount Hotel  
808 SW Taylor St.  
Portland, OR 97205  
503-943-5844  
swankandswine.com

### **Shigezo**

910 SW Salmon St.  
Portland, OR 97205  
503-688-5202  
shigezo-pdx.com

### **Fogo de Chao Brazilian Steakhouse**

930 SW 6<sup>th</sup> Ave.  
Portland, OR 97204  
503-241-0900  
fogodechao.com

## Laundry

**Washers and dryers:** Three washers and three dryers are available in room 52, 5<sup>th</sup> floor Dressing Room Tower

### Dry Cleaning

Bee Dry Cleaners  
1026 SW Salmon St.  
Portland, OR 97205  
503-277-1144

Auditorium Cleaners  
128 SW Clay St.  
Portland, OR 97201  
503-222-2133

## Travel Directions

**From the North (I-5 South or I-84 West):** Follow I-5 South to the “City Center/Oregon City” exit. Follow “City Center” signs. After crossing the Morrison Bridge, follow SW Washington to 3<sup>rd</sup> Avenue. Turn left on 3<sup>rd</sup> Avenue. Go 10 blocks to SW Clay Street. Keller Auditorium is on the left.

**From the South (I-5 North):** Follow I-5 to Naito Parkway exit. Follow signs to Naito Parkway. Cross Naito Parkway and continue three blocks to SW 3<sup>rd</sup> Avenue. Keller Auditorium is on the left.

**From the East (Highway 26 West or Highway 99 West/McLoughlin Boulevard):** Cross the Ross Island Bridge and follow “Highway 26/Naito Parkway” signs. Turn right onto Naito Parkway and follow to SW Clay Street. Continue 3 blocks to SW 3<sup>rd</sup> Street. Keller Auditorium is on the left.

**From the West (Highway 26 East, “Sunset Highway”):** Choose the center lane upon approaching the Vista Ridge Tunnel. Take the “Market Street/City Center” exit after exiting the tunnel (center lane). Continue on SW Market to 3<sup>rd</sup> Avenue. Keller Auditorium is on the left.

## Parking

**Production and Talent Parking:** Limited parking spaces for loading/unloading may be coordinated with the Production Department. Portland’5 does not have a parking lot or arrangements for reduced parking prices with any surrounding lots.

**Long-Term Truck Parking:** Portland traffic regulations prohibit overnight curbside parking. The Production Department can provide information about long-term parking options.

## Accessibility

Wheelchair accessible seats available at the rear of Orchestra level and on Box level.

Assistive Listening Devices are available from Coat Check for every event.

Audio Description, Captioning and American Sign Language Interpretation are available upon request. Please coordinate with the Box Office.

**Emergency Numbers:**

**ALL EMERGENCIES – 911, OR 9-911 FROM INSIDE PHONE LINES**

Fire Non-Emergency: 503-823-3333

Police Non-Emergency: 503-823-3333

Ambulance: 911

Hospital Emergency Room

Legacy Good Samaritan Medical Center  
1015 NW 22<sup>nd</sup> Ave  
Portland, OR 97210  
503-413-7711

Urgent Care Clinic

ZoomCare  
202 NW 13<sup>th</sup> Ave.  
503-684-8252  
zoomcare.com

Chiropractic Clinic

City Chiropractic  
806 SW Broadway Ste 350  
Portland, OR 97205  
503-224-9513  
citychiro.net

Dental Clinic

Emergency Tooth Doctor  
1505 SW Broadway  
Portland, OR 97201  
503-222-0090  
emergencytoothdoctor.com

# Management

## **Production Office/Promoter Room**

Stage level, offstage right, phone and internet hard lines available. Wireless internet available on stage, in house and lobby. [Additional costs may apply]

## **Green Room**

Green Room is offstage right, four steps below stage level, is 23' 5" (7.14m) x 20' 5" (6.22m) and can be accessed by stairs or ramp from SR hallways. Green Room has limited furniture available. Vending machines in basement.

## **Internet & Wifi Access**

Internet [additional costs apply] & Wi-Fi access are available

## **Stage Manager's Console**

Typical placement is DSR  
Color FOH video monitor  
2 B&W video monitors  
Color video mirror of lighting cue stack  
4-channel intercom  
Audio monitor  
Cue light switching for fly rail and orchestra pit

## **Rehearsal Room**

1<sup>st</sup> Balcony level, SL, accessed by stairs offstage L or elevator from basement level (ramp from SL to basement). Elevator access is in slight public view. Rehearsal room dimensions are 38' (11.58m) x 45' (13.72m), with a maple floor. No mirrors or barres. 100A, 3-phase power with cam-lock connections is available on a circuit shared with the sound room. This room is also often used for backstage catering/hospitality.

## **Crews**

Minimum call for stage crew is five Portland's Department Head Stagehands for four hours (Carpentry, Props, Fly, Lighting, and Sound), and must be present for all work on stage, including load-in, rehearsal, performance, and load-out. Stagehand break requirements include a 15-minute break in any call of 2.5 hours or more, and 1-hour meal break (unpaid) or ½-hour meal break (paid, meal provided) no later than five hours into a call. Please contact the Production Department for additional information.

Any event with a tractor-trailer requires traffic control flaggers and special permitting which are added costs. Contact a Production Supervisor for more details.

Additional Union Stage Labor available through IATSE Local 28, 503-295-2828 or coordinating through Production Department. These labor expenses can be passed through on final settlement.

**Stage Accessibility**

The stage is wheelchair accessible from the stage door and star dressing rooms, and from the dressing tower via elevator. The stage is wheelchair accessible from the auditorium orchestra level via service hallways SL and SR.

**Policies**

**See Attachment H: Policies**



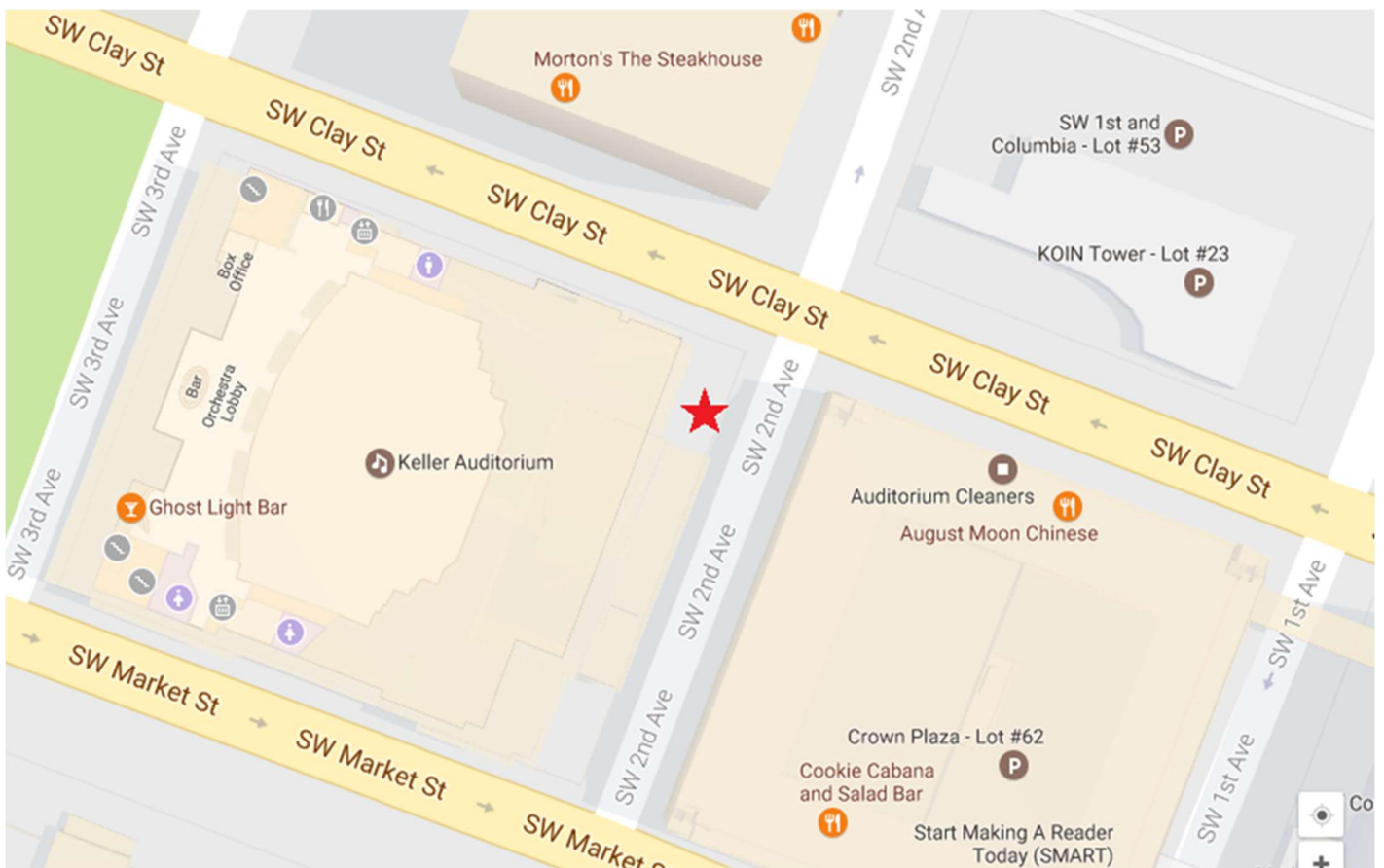
# Load-In Area

## Location

The loading dock is located at the intersection of SW 2nd Avenue and SW Clay streets, on the Clay Street side of the building, NE corner of the block.

## Map

[Click to view in browser.](#)



**Dimensions and Description**

The truck dock is 23' (7.01m) W and 30' (9.14m) L and accommodates up to two 53' trailers at a 3% / 7° decline from street level. The loading dock height is 30" (0.76m), and the exterior dock area is approximately 7' (2.13m) deep and 23' (7.01m) wide. The overhead loading door is 10' (3.05m) H x 14' (4.27m) W. Inside the loading door is a ramp 19' (5.79m) W and 11' (3.35m) L leading down 12" (0.30m) to stage level. The slope of the ramp is approximately 3% / 7°. Tractors may not be left attached to trailers for any extended period of time.



# Carpentry

## Stage Dimensions

**Note:** US/DS measurement are taken from the Plaster Line (PL), which is the upstage edge of the proscenium. Center Line (CL) is the center of the proscenium opening. The Fire Curtain Line shall not be obstructed.

Proscenium Opening: 59'-11" (18.28m) W x 29'-10" (9.09m) H

Stage Depth: PL to DS edge of pilaster on US wall (i.e. usable space): 42'-2" (12.86m)

PL to US wall: 43'-6" (13.26m)

PL to US edge of hardwood deck: 45'-1" (13.74m) PL to US edge of Smoke Pocket: 6.5" (0.17m)

PL to US edge of Fire Curtain (scored ref line on deck): 5.25" (0.13m) PL to DS apron edge: 5'-6.75" (1.7m)

PL to DS edge of pit elevator at CL: 16'-2.75" (4.95m) PL to DS edge of pit elevator at SL/SR: 6'-11.5" (2.12m)

Stage Width: SL Wall to SR Fly Rail: 104'-3"

(31.78m) CL to SL wall: 53'-7.5" (16.34m)

CL to SL mid bridge: 47'-5" (14.55m)

SL Wing Space (SL proscenium edge to SL wall): 23'-8" (7.21m) CL to SR rail: 50'-7.5" (15.44m)

CL to SR mid bridge: 41'-9" (12.73m)

SR Wing Space (SR proscenium edge to SR rail): 20'-8" (6.3m)

\*Permanent obstruction - There is a concrete ramp on SL that leads to an offstage storage area. This ramp extends from the SL wall 8' (2.44m). It is 11' (3.35m) wide and is 8'11" (2.72m) US of the Plaster Line.

Orchestra Pit Elevator: 55'-6" (16.92m) W @ US edge x 10'-7" (3.23m) D @

CL CL to SL/SR pit edge: 27'-9" (8.46m)

Standard elevator travel (used by most shows): 7'-8" (2.34m) Ultimate elevator travel: 8'-11" (2.72m)

\*Space available under stage when pit is down: 8' (2.44m) US of Apron Line x 64' (19.5m) W

\*The standard elevator travel distance makes the pit level with the 16" risers lining the entirety of the space below the stage.

\*Hydraulic, Operated from pendant DSR.

Vertical dimensions:

Grid Height: 78'-6" (23.93m)

\*Height to structural steel varies slightly across 5 major US/DS beams following roofline (highest at center); 3 major beams SL/SR at approx. 88' (26.82m)

Stage Height: 3'-5.5" (1.05m) from House floor.

Slab loading dock and concrete storage area US of hardwood deck: 83' (25.3m) W x 18'-9" (5.71m) D.

**Stage Floor**

Screws and nails are allowed in the stage floor. Any significant damage must be repaired after use.

**Seating**

Orchestra Level	1850, 32 of which are wheelchair accessible
Box Level	188
1 <sup>st</sup> Balcony	425
2 <sup>nd</sup> Balcony	529
<b>Total Seating Capacity</b>	<b>2992</b>
Pit Seats (by request)	42
<b>Total Using Pit Seats</b>	<b>3034</b>

**Seating Chart: See Attachment F**

**House Draperies (Goods)**

House Curtain	Red banjo cloth with black backing 6" (15cm) US of reference line Guillotine only, manual from SR [not part of lock rail]
Valance	None

Legs	10	35' (10.67m) H x 21' (6.40m) W (hung on L.S. No. 76 as BOD)
	2	35' (10.67m) H x 15' (4.57m) W (portal masking)
Borders	5	12' (3.66m) H x 74' (22.56m) W
Tabs	4	31' (9.45m) H x 10' (3.05m) W (SR)
	4	40' (12.19m) H x 10' (3.05m) W (SL)
Blackout drop	1	35' (10.67m) H x 74' (22.56m) W
Blackout panels	4	35' (10.67m) H x 30' (9.14m) W can be used to make traveler (2 panels) or blackout drop (2-3 panels)
White filled scrim (bounce only - has defects)	1	35' (10.67m) H x 70' (21.34m) W

**Stacking Motors** – One stacking motor USR and one USL

**Line Set Data**

**Line Set Schedule: See Attachment D**

**Working Height of Battens** High trim = 71' 10" (21.89m), Low trim = 4' 0" (1.22m)

**Battens** 74' (22.56m) / 1 ½" ID sch80 steel pipe  
6 lift lines per set  
loft blocks mounted upright on grid  
sheave wells are @ CL, and R & L of CL @ 7' (2.13m), 14' (4.27m), 21' (6.40m), 28' (8.53m), and 34' (10.36m)

**Type** 76 single-purchase, T-track  
manual operation SR at stage level  
  
Main curtain is single purchase, manually operated from SR stage level, not part of lock rail

**Capacity** 1500 lbs. over pipe weight

**Available Weight** ~24,000lbs.

**Loading Galleries** 78' 6" (23.93m), and 36' 2" (11.02m) SR  
accessed by spiral staircase USR, ladders, and elevator to staircase SR

**Pin Rails** 1 @ 40' 2" (12.24m), and 1 @ 38' 2" (11.63m) SR  
43' 8" (13.31m) SL

**FOH Rigging Points (2,000 lbs WLL)** 21' (6.4m) from PL, at C and 18' (5.5m) L and R  
40' (12.2m) from PL, at C and 12' (3.7m) L and R  
(request chart for all points)

### Support Areas

**Crossover:** Crossover US through staging area aka "the Slab" behind US wall.

**Access:** Stage is accessed from Green Room, Production Office, Star Dressing Rooms, and Dressing Tower through a single door DSR. The scenery dock/staging area (aka "the Slab" US may be used as a crossover. There is no direct access from the dressing rooms to SL. Dressing Tower and orchestra pit are accessed by stairs or elevator offstage right. FOH sound and lighting positions accessed via service hallway house left or lobby elevators. Spot booth accessed by FOH elevator and stairs on Balcony Level 2. Box and balcony lighting and video positions accessed by FOH elevator from the basement (ramp from stage level).

**Storage:** Dead case storage available in the basement.

Staging and props area offstage SL, approximately 1100ft<sup>2</sup> (102.2m<sup>2</sup>), with an unobstructed area of approximately 30' (9.14m) x 30' (9.14m).

US staging area and crossover immediately inside the loading dock door, 80' (24.38m) W, 19' (5.79m) D, and 34' 9" (10.59m) clear height.

**Shop Area:** There is a small carpentry and metals shop in the basement of the building which can be used for minor repairs.

**Orchestra Locker Rooms/Lounge:** Located on basement level SR. See "Wardrobe".

**Notes:** A crew lounge is available in the SL staging area.

Various lengths of bottom pipe available.

# Lighting

## Power

**Company Switches:** 120/208V, 3-phase, cam connectors or bare tails, with reversed ground and neutral. [additional cost]

2	400A USR, stage level
1	400A DSR dimmer room, 10' above stage level
1	200A DSR dimmer room, 10' above stage level
1	200A DSL, isolated ground

**Shore Power:** We have three hook ups to shore power for buses on Clay Street.

## Dimmers

Dimmer-per-circuit; ETC 288 @ 2.4kW

## Lighting Consoles

ETC GIO10, ETC GIO

## Console Locations

House control room offstage down stage right, 10ft. above stage level.

Touring console location at rear of orchestra level, section C, under balcony. 250' snake run to DSR. Seat kills required. Must be arranged in advance with Production Department.

**See Attachment G: FOH Mix Position, for more details**

## Houselights

Houselights are controlled through console, or via work light panels at various locations.

## Circuits

Dimmer per circuit. 96- 20A circuits FOH, fixed receptacles. 150- 20A circuits on mid bridges, accessed by Socapex drops, 28- 20A circuits in dimmer room DSR, 10ft. above stage level.

3- 50A, 120v convenience circuits available on the balcony rail, switchable from the dimmer room. Twist lock w/Edison breakouts.

16- 20A receptacles on stage, some switchable from the dimmer room.

## Front of House Lighting Positions

FOH positions include ceiling slots, cove slots, box booms, balcony rail, and apron booms.

## House Plot

There is no "House Hang" lighting plot in the Keller Auditorium.

## Equipment Inventory

<b>Instruments</b>	6	ETC 5°	Source 4 (lens tubes only)
	2	ETC 10°	Source 4 (lens tubes only)
	30	ETC 10°	Source 4 750W (hung FOH Covs + Boxes)
	12	ETC 14°	Source 4 (lens tube only)
	50	ETC 19°	Source 4 575W
	15	ETC 19°	Source 4 750W (all hung FOH)
	80	ETC 26°	Source 4 575W
	50	ETC 36°	Source 4 575W
	6	ETC 50°	Source 4 (lens tube only)
	30	ETC PAR	Source 4 750W (standard lens kit)
	50	Altman PAR64, MFL (other lamps by arrangement)	
	14	3-cell Colortran Far Cycs 1kW/cell	
	24	3-circuit 8' PAR 56 strip lights 500W/cell (4 cells/circuit)	

**Follow Spots** 4 Lycian 1295 XLT (3kW Xenon) [additional cost]

**Hardware** Various long lengths of pipes and side arms  
10 irises  
20 top hats (6.25")  
20 half-hats (6.25")  
12 barn doors (PAR size)  
12 donuts, both 6 ¼" and 7 ½" sizes  
20 A and B sized template/gobo holders

**Cable, 6-Cir. Socapex** 4 25' (7.62m)  
12 50' (15.24m)  
11 75' (22.86m)  
4 100' (30.48m)  
28 fan-outs, 20A GSP  
4 break-ins, 20A GSP

**Cable, single-circuit:** Various quantities of 20A GSP cables in lengths from 5' to 100', plus two-fers.

## Lift and Ladders

- 1 Genie MEWP (AWP 40S), Max Working Height = 46' 4' (14.02m)
- 1 Genie MEWP (IWP-30S), Max Working Height = 35' 6' (10.82m)
- 1 12' (3.65m) ladder
- 1 10' (3.05m) ladder
- 2 8' (2.44m) ladders



- 3 6' (1.83m) ladders
- 2 4' (1.21m) ladders

**Film, Video, and Projection Equipment**

There is no electronic projection or video equipment in-house. Projector shelves (for projectors up to 70 lbs) are available which can be positioned on the balcony rail. These may also be used for “yoking out” intelligent lighting fixtures on the balcony rail. Eight shelves available, in two different types depending on size and need of projector shelf. Contact Production for more details if needed.

**Projection distances, to PL @ C, 6' (1.83m) above stage)**

Balcony rail C	94' / 7.5 degrees
Second balcony rail position	116' 9"
Projection booth window	145' 8"
Ceiling slots	86' / 35 degrees
Cove slots	52' / 53 degrees
Box Boom #1	43' / 10 degrees
Box Boom #2	56' / 20 degrees
Box Boom #3	90' / 45 degrees
Orchestra first row	23'
Orchestra last row	116'

**Haze, Fog, Atmospheric**

Atmospherics are permitted for use in the Keller Auditorium. Please advise Production during advance and the Dept. Head Stagehand Electrician prior to utilizing in physical space.

**Other**

Clip lights, tech table lights and music stand lights available

FOH ceiling/cove fixtures are not moveable

Various lengths of Sch40 pipe available.

# Sound and Video

## Power

- Company Switch: 1 - 200A, 120/208V, 3-phase, cam connectors or bare tails, with reversed ground and neutral. — DSL, isolated ground
- 1 - 100A in Audio Control room, isolated ground - Camlock
- 1 - 50A in Audio Control room, isolated ground - Lugs only
- 3- 30A outlets in Audio Control room. (1 wired to FOH mix, 1 for House P.A. when used). (ISO Transformer Sound power)

## Sound Consoles

DiGiCo SD12T <https://digico.biz/consoles/sd1296>

- 96 Input Channels / 48 Aux/Sub-Group Busses
- 26 faders
- LR/LCR Master Bus
- 12 x 8 Full Processing Matrix / 2 Solo
- Control Groups: 12, Selectable for VCA-style, Moving Fader, Mute Group
- Dynamic Equalizers, DiGiTuBes and Multiband Compressors available on all channels
- 12 Digital FX / 16 Graphic Equalizers
- 48/96kHz Sample Rate
- Theater Software
- Includes DMI-MADI-C and DMI-DANTE64@96
- 1- Little Red Box (use to share D2 racks to connect to another Cat5-MADI DiGiCo SD Console) (*48k only w/ 1 LRB*)
- UB MADI interface
- RME MADIFace interface
- MacMini Recording Computer
- Reaper Commercial Recording Software
- Audacity Recording Software
- QLab 3 and 4 available (*client must purchase day licenses*)

## I/O:

### 2 x DiGiCo D2 Racks

- <https://digico.biz/racks/d2-rack/>
- 48 inputs / 16 outputs / 2 AES Cards (8 ch each)

- One rack available DSL or in Orchestra pit (No AES)
- One rack permanently installed in Audio Control room

#### External Gear:

Eventide DSP7000 Reverb

<https://www.eventideaudio.com/rackmount/dsp7000/>

#### Microphones and Direct-In Boxes (DI's):

- 6 - Shure SM58
- 6 - Shure SM57
- 4 - Shure SM58S (1-perm. backstage page)
- 7 - Neuman KM184
- 6 - AKG 451 w/ Swivel heads/CK1/CK3/CK22 Capsules
- 2 - AKG 414 ups
- 4 - Sennheiser 421
- 5 - Crown PCC160
- 2 Shure ULXS-4 Wireless Transmitters, 2x Beta58A Handhelds, 2 Lav packs.
- 4 - EV PL20
- 1 - AKG 4266 stereo mic
- 6 - Audio Technica 853a
- 1 - Radial USB Pro
- 2 - Radial JDI Duplex Stereo DI with Jensen Transformers
- 2 - Klark Teknik DN100 Active DI Box
- 2 - Stewart electronics ADB-1 Active Direct Box
- 2 - Furman ISO Patch Dual Transformer Isolator IP-2

#### Microphone Stands:

- 4 - Tabletop stands
- 7 - unistrut mount booms
- 2 - unistrut mounts DSL w/articulating booms for Antennae
- 4 - large base w/booms
- 2 - K&M Tall/Medium tripods w/booms
- 2 - K&M Short tripods w/booms
- 7 - Atlas Medium stands
- 2 - Atlas Short stands
- 6 - Atlas Tall boom stands chrome
- 3 - Atlas Tall stands chrome
- 5 - Tall stands black
- 2 - stereo bars (2 fixed, 3 adjustable)
- 6 - gooseneck attachments (chrome and black varied length)
- 8 - Doughnut mic stand sandbags

**Cables:**

*Various adapters and transformers.*

*Various lengths (20' and under) 1/4" & TRS cables*

**XLR**

- 1'-5' —9
- 10' —19
- 15' —16
- 20'-25' —10
- 30' — 17
- 50' — 1
- 75'— 1
- 80' — 1
- 100' — 5

**XLR 4-Pair**

- 20' — 2
- 55' — 1 (5ch)
- 70' — 3
- 60' — 1

**12/3 Edison Quads:**

- 2' — 3
- 5' — 3
- 10' — 3
- 25' — 3

**NL4**

- 5' — 5
- 10' — 10
- 25' — 6
- 50' — 2
- 75' — 2
- Barrels — 8

**COM:**

**(4CH CLEAR-COM AVAILABLE THROUGHOUT THE VENUE.)**

- 8 - 4ch. Freespeak II wireless clearcom
- 2 - 4ch. base stations (for tech table and SM call desk)
- 6 - single channel belt packs
- 6 - dual channel belt packs
- 13 - single muff headsets
- 2 - double muff headsets
- 6 - remote com stations
- 4 - phone handsets
- 5 - push-to-talk (CB) mics
- 2 - flasher/beacons

- **Spot-booth:**
  - 5 - dual channel belt packs with program
  - 5 - single muff headsets

### **Monitor/Paging System**

- Stage monitors in Audio Control room, dressing rooms, green room, and offstage areas.
- Road Show Program, Program/Page, ALD feeds can be connected to the house system in four locations: DSL, DSR, FOH or in Audio Control room.
- Backstage Page mic always available DSR.

### **Hearing Assist System**

- Listen Technologies Intelligent DSP RF Receivers (72 MHz) model LR-4200-072 and Headsets available at Coat Check in Main Lobby.

### **Video Monitoring**

- Multiview monitoring available at SM Station
- FOH shot available in Green Room

### **Cameras**

- 1 – Fixed, FOH color camera, mounted on 2nd balcony railing, with distribution to backstage.
- Digital Panasonic PTZ cameras over SDI with distribution to SM console
- 1 - B&W camera for conductor with distribution to stage.

### **Video Monitors**

- 1 - Sony 20" color
- 2 - Sony 25" color
- 1 - Panasonic 8" B&W

### **Other Gear**

- 3 - 10/5 Stinger breakout boxes
- 2 - Horizon PB-8 ISO Press Box

### **House Mix Position**

Located at the rear of Orchestra Section C, rows DD, EE, and FF. This area can accommodate both sound and lighting consoles. If not in use, it may be converted to seating and opened for sale at an additional cost. Coordinate with Production Department prior to show day.

**FOH Mix Position- See Attachment G for more details.**

**Other Info:**

- 250' snake run from House Mix position to SL. (Runs around balcony, requires 3+ additional hands to run/strike snake)
- SM Console
  - Video Monitors:
    - Color FOH
    - 2x Side PTZ
    - Conductor (when pit is in use)
  - Lighting Cue-Stack
  - Cue-Light controls
  - COM base station control
  - Show Audio Feed
  - VOG
  - Backstage page
- 3- XLR "Dry lines" to Spot booth patchable DSL, DSR, or at FOH.
- Wireless microphones may be available for extra charge by prior arrangement. They must be reserved in advance and are subject to prior booking.

# Props

## **Orchestra Pit**

**Elevator:** Pit capacity is approximately 70 musicians, using both sections of pit elevator. 55' 6" W (16.92m), 10' 7" (3.23m) D @ CL, 1'5" (0.43m) D @ SL/SR, adjustable to stage, seating, or orchestra pit level, or anywhere in between. Typical pit position for orchestra is -7' 8" (2.34m). Maximum travel is 8'11" (2.72m). Pit wall sections installed whenever elevator is positioned below seating level.

**Pit riser:** Raises floor of pit upstage of elevators to playing height and may be removed only by prior arrangement with Production Department. 8' (2.44m) D x 64' (19.51m) W x 16" (0.41m) H.

**Orchestra Lockers and Lounge:** Located on basement level, SR side. See "Wardrobe" section for further detail.

**Music Chairs:** 135 musician chairs, 80 in pit area, 55 in rehearsal hall typically.

**Stands:** 95 music stands, various types.

**Stand Lights:** 50+ LED stand lights

**Pianos:** A Steinway D (9') Grand and a Steinway B (7') Grand are available to rent. Tunings can be arranged through the Production Department upon request [additional cost].

## **FOH Step Units**

Two sets of FOH steps units are available with prior arrangement. One set is to be used when the orchestra pit elevator is at house level. These two units can be placed along the front edge of the stage, anywhere in between the proscenium opening. If audience members/patrons will use the stairs, handrails are mandatory and may cause slight view obstruction. If pit seats are being sold, seat kills will be necessary if FOH steps units are also used. The other set of step units are used when the orchestra pit elevator is at stage level. These units are only 21" wide and are placed on the offstage edge of the orchestra pit. Handrails are non-removable.

## **Choral Risers**

None available

## **Platforms**

<b>Decks</b>	6	4'x8' (1.22m x 2.44m), hard plastic top
	2	4'x8' (1.22m x 2.44m), carpeted top

<b>Legs (pipe style)</b>	32	16" (0.41m)
	16	12" (0.30m)
	8	8" (0.20m)

**Dance Floor**

Black marley, 6 rolls, 6' 7" (2.01m) W x 60' (18.29m) L. Tape included. [Additional cost, client must transport from and back to Antoinette Hatfield Hall where it is stored, 9 city blocks away.]

**Lecterns**

One available by prior arrangement

**Other Equipment**

6 - 8', 6 – 6' and 4 – 4' folding tables (by prior arrangement)

100- plastic stacking chairs (located in dressing tower dressing rooms, 30-40 available at stage level)

Dollies, hand trucks, and truck dock plate



# Wardrobe

## Dressing Rooms

Star dressing rooms at stage level, accessed from SR. All other dressing rooms accessed by elevator or stairs SR. All dressing rooms have mirrors, counters, makeup lights, and chairs. Non-chorus rooms have wall racks for hanging costumes.

**Please note: Many Dressing Room Tower doors are 28 ½" wide. Most standard road cases will not fit.**

**Lower level (basement):** Orchestra Lounge is 38' (11.58m) x 10' (3.04m), accessed by stairs or elevator from SR, or directly from the orchestra pit if in use. This room has drink and snack machines. There is also a large room 15' (4.57m) x 13' (3.96m) labelled Room 3. This room is frequently used as a production office, orchestra lock-up, or storage. Additionally, there are two orchestra dressing rooms, equipped with restrooms, showers and lockers.

**1<sup>st</sup> Floor (stage level):** 2 Star dressing rooms with furnished lounge, dressing room, and private bathroom with showers.

## 2<sup>nd</sup> Floor, Dressing Tower

Rm #	Person(s)	Sink(s)	Toilet(s)	Shower(s)
20	24	3	2	2/2 shared
21	2	1	1	2/2 shared
22	2	1	1	2/2 shared
23	2	1	1	2/2 shared
25	2	1	1	2/2 shared

## 3<sup>rd</sup> Floor, Dressing Tower

Rm #	Person(s)	Sink(s)	Toilet(s)	Shower(s)
30	19	2	2	2/1 shared
31	3-4	1	1	2/1 shared
32	2	1	1	2/1 shared
33	2	1	1	2/1 shared
35	1-2	1	0	2/1 shared

#### 4<sup>th</sup> Floor, Dressing Tower

Rm #	Person(s)	Sink(s)	Toilet(s)	Shower(s)
40	10-12	3	3 shared	2 shared
41	3	2	3 shared	2 shared
42	6	2	3 shared	2 shared
43	4	3	3 shared	2 shared

#### 5<sup>th</sup> Floor, Dressing Tower

Rm #	Person(s)	Sink(s)	Toilet(s)	Shower(s)
50	10-12	3	3 shared	2 shared
51	2	2	3 shared	2 shared
53	4	3	3 shared	2 shared

#### Wardrobe Area

Wardrobe room on 5<sup>th</sup> floor of dressing tower, Room 50.

**Irons:** 1

**Ironing Boards:** 2

**Steamers:** 3 [additional cost]

**Washers/Dryers:** 3 washers & 3 dryers, 5<sup>th</sup> floor [additional cost]

**Racks and Hangers:** 10 rolling racks, no hangers provided.

#### Quick Change Booths

64' linear feet of 8' tall pipe and drape available from Prop Department with prior arrangement.  
Eight hanging mirrors available.

#### Laundry

**Washers and dryers:** Three washers and three dryers are available in room 52, 5<sup>th</sup> floor  
Dressing Room Tower

#### Dry Cleaning

Bee Dry Cleaners  
1026 SW Salmon St.  
Portland, OR 97205  
503-277-1144

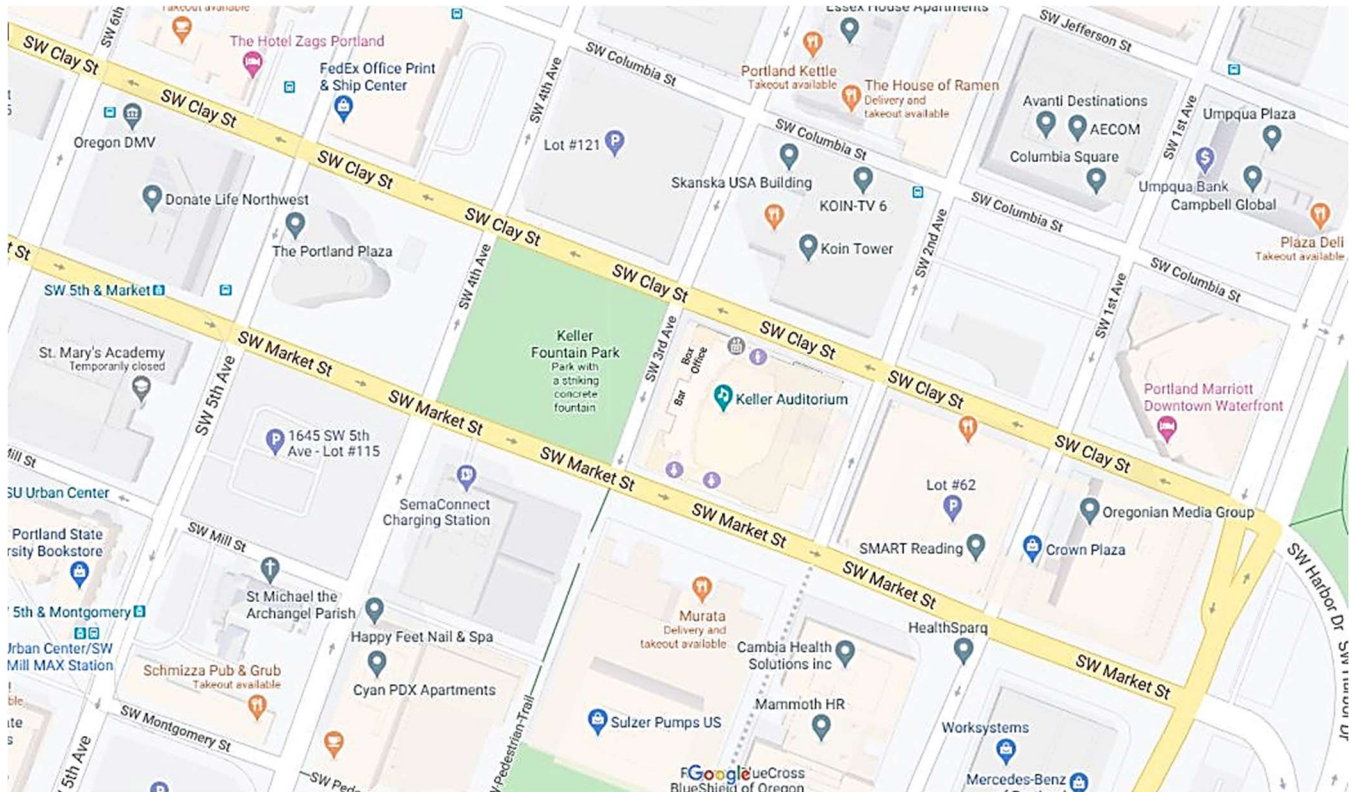
Portland, OR 97201  
503-222-2133

Auditorium Cleaners  
128 SW Clay St



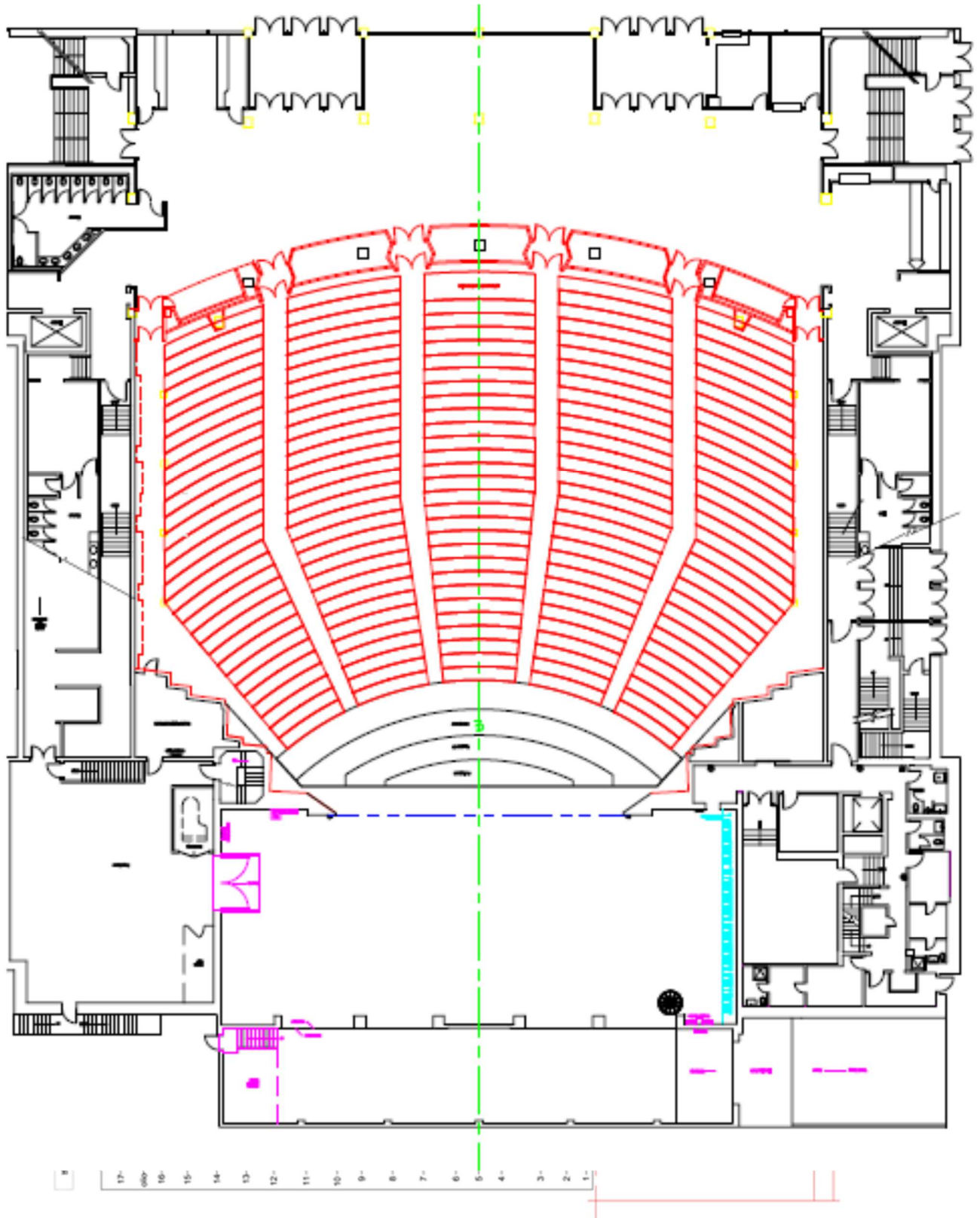
# Attachment A: Map of Theater Location

[Click to view online.](#)



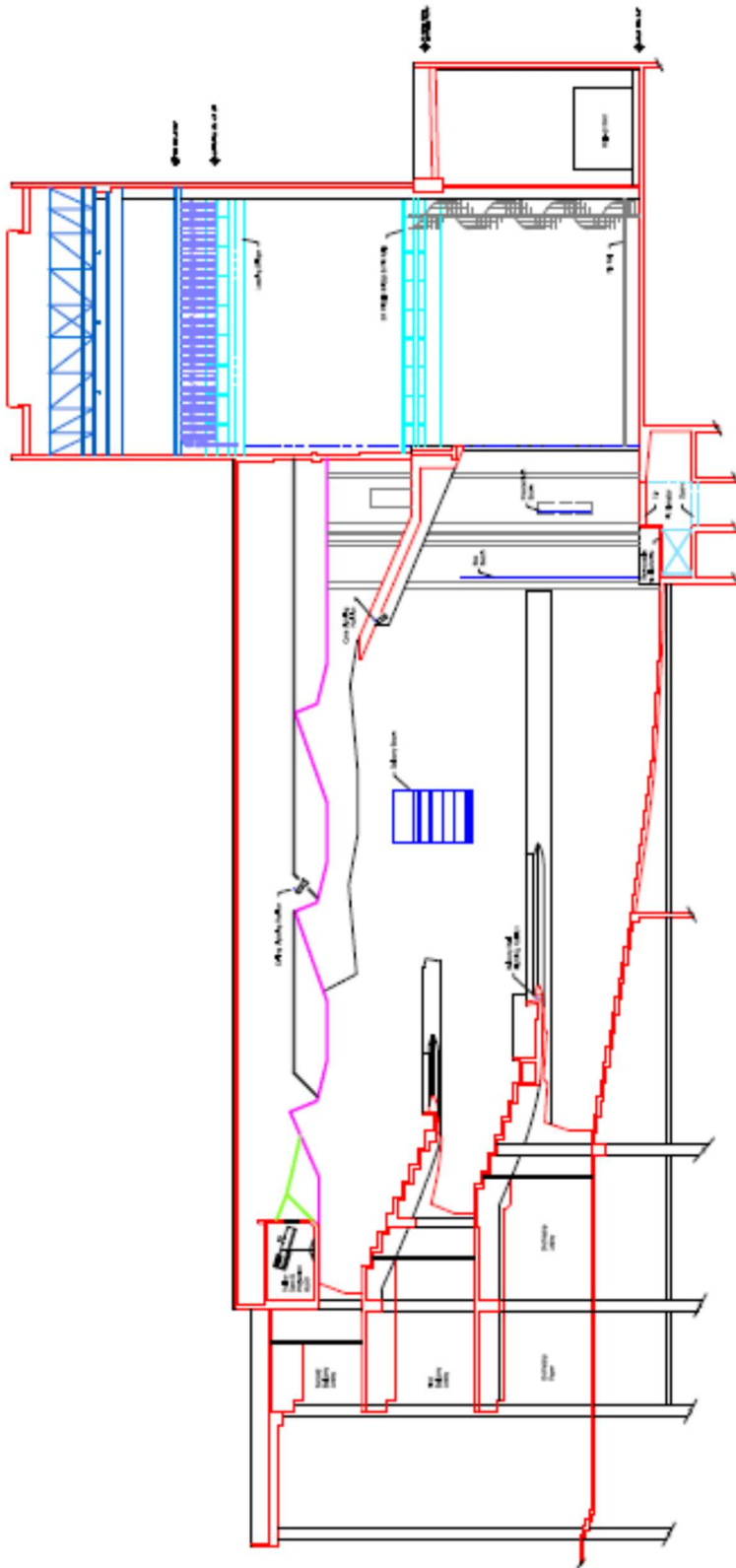
# Attachment B: Ground Plan

Contact Production Department for full-sized drawing.



# Attachment C: Section

Contact Production Department for full-sized drawing.





## Attachment D: Line Set Schedule

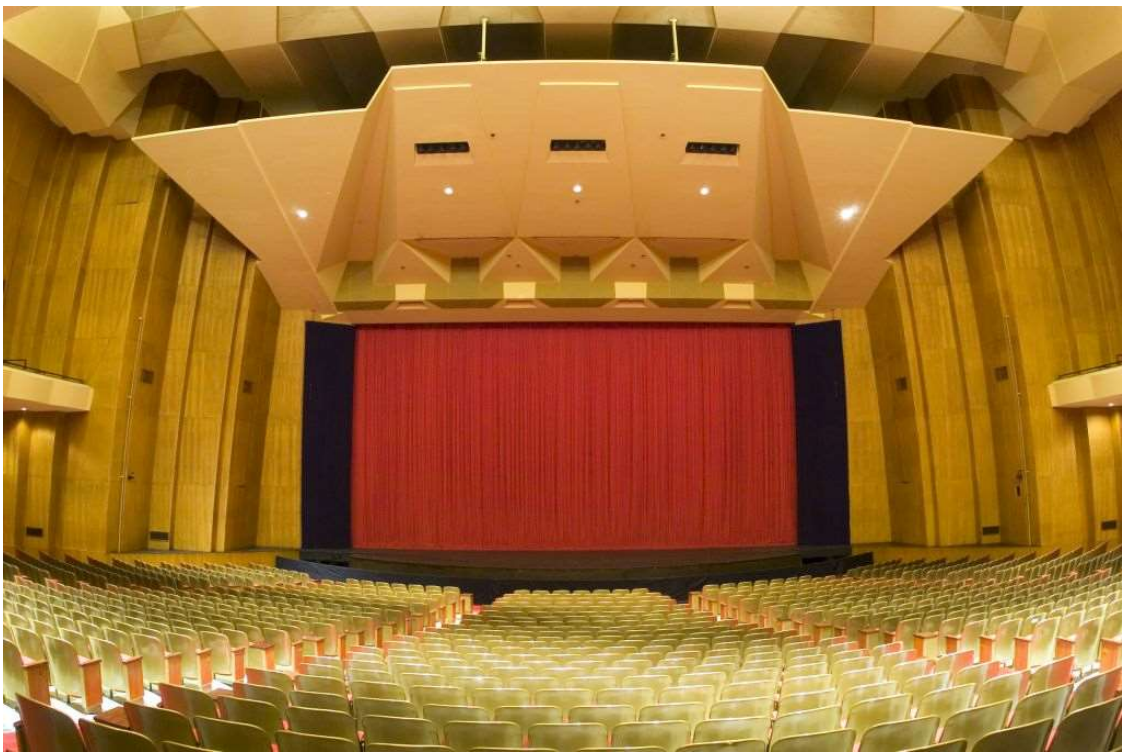
Lineset	Distance	Notes
	-3" (7.6cm)	Plaster Line
	0' 0" (0.0m)	Fire Curtain
	0' 6" (0.15m)	Main Curtain
1	1' 0" (0.30m)	
2	1' 6" (0.46m)	
3	2' 0" (0.61m)	
4	2' 6" (0.76m)	
5	3' 0" (0.91m)	
6	3' 6" (1.07m)	
7	4' 0" (1.22m)	
8	4' 6" (1.37m)	
9	5' 0" (1.52m)	
10	5' 6" (1.68m)	
11	6' 0" (1.83m)	
12	6' 6" (1.98m)	
13	7' 0" (2.13m)	
14	7' 6" (2.29m)	
15	8' 0" (2.44m)	
16	8' 6" (2.59m)	
17	9' 0" (2.74m)	
18	9' 6" (2.90m)	
19	10' 0" (3.05m)	
20	11' 0" (3.35m)	
21	11' 6" (3.51m)	
22	12' 0" (3.66m)	
23	13' 0" (3.96m)	
24	13' 6" (4.11m)	
25	14' 0" (4.27m)	
26	14' 6" (4.42m)	
27	15' 0" (4.57m)	
28	15' 6" (4.72m)	
29	16' 0" (4.88m)	
30	16' 6" (5.03m)	
31	17' 0" (5.18m)	
32	17' 6" (5.33m)	
33	18' 0" (5.49m)	

Lineset	Distance	Notes
38	20' 6" (6.25m)	
39	21' 0" (6.40m)	
40	21' 6" (6.55m)	
41	22' 6" (6.86m)	
42	23' 0" (7.01m)	
43	23' 6" (7.16m)	
44	24' 0" (7.32m)	
45	24' 6" (7.47m)	
46	25' 0" (7.62m)	
47	25' 6" (7.77m)	
48	26' 0" (7.92m)	
49	26' 6" (8.08m)	
50	27' 0" (8.23m)	
51	27' 6" (8.38m)	
52	28' 0" (8.53m)	
53	28' 6" (8.69m)	
54	29' 0" (8.84m)	
55	29' 6" (8.99m)	
56	30' 0" (9.14m)	
57	30' 6" (9.30m)	
58	31' 0" (9.45m)	
59	31' 6" (9.60m)	
60	32' 0" (9.75m)	
61	33' 0" (10.06m)	
62	33' 6" (10.21m)	
63	34' 0" (10.36m)	
64	34' 6" (10.52m)	
65	35' 0" (10.67m)	
66	35' 6" (10.82m)	
67	36' 3" (11.05m)	
68	37' 0" (11.23m)	
69	37' 6" (11.43m)	
70	38' 0" (11.58m)	
71	38' 6" (11.73m)	
72	39' 0" (11.89m)	
73	39' 6" (12.04m)	

34	18' 6" (5.64m)	
35	19' 0" (5.79m)	
36	19' 6" (5.94m)	
37	20' 0" (6.10m)	

74	40' 0" (12.19m)	
75	40' 6" (12.34m)	
76	41' 0" (12.50m)	

Attachment E: Photos of Stage and House



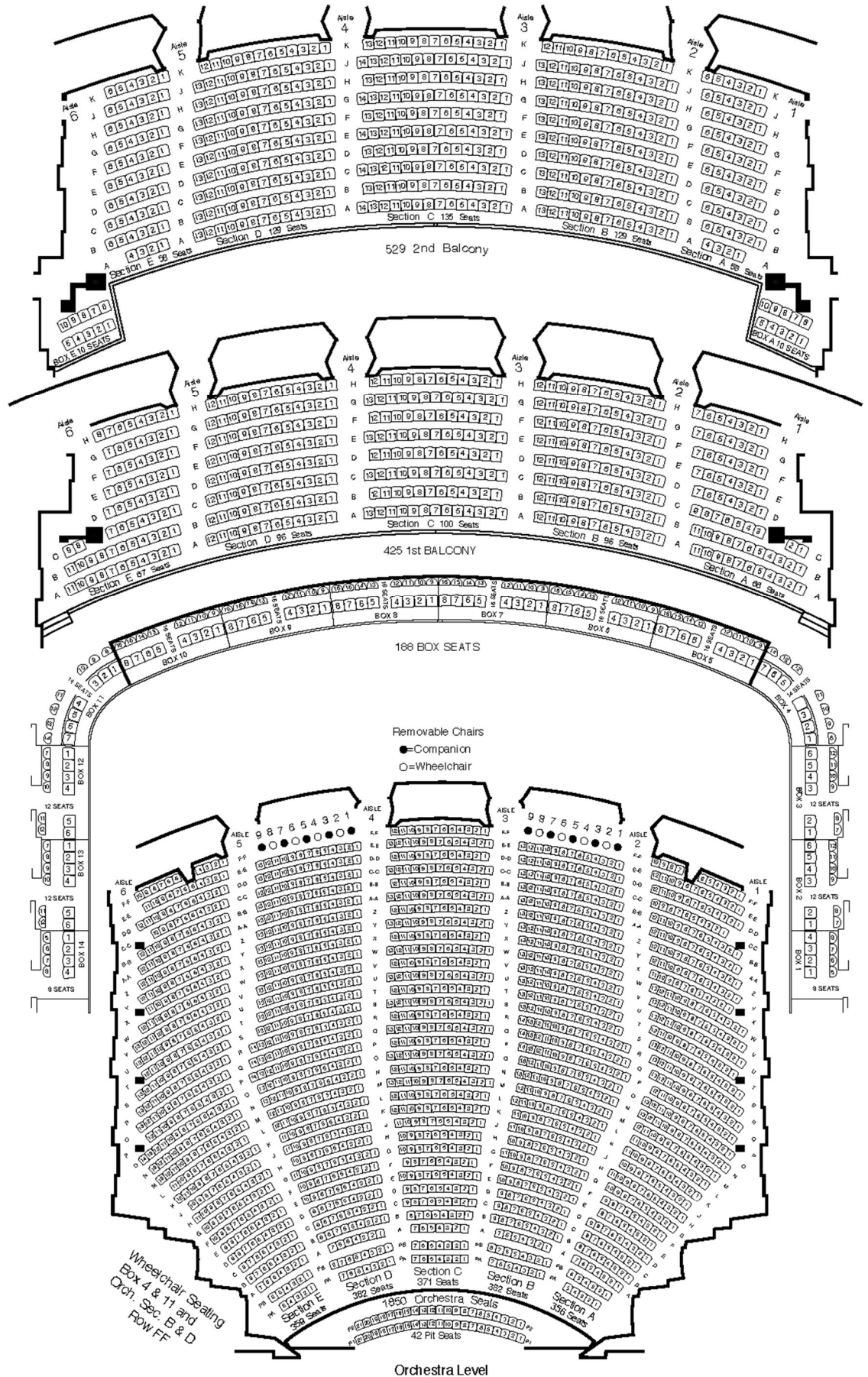


# Attachment F: Seating Chart



PORTLAND'S  
**KELLER  
AUDITORIUM**

2992 Capacity  
(with pits 3034)





# Attachment H: Policies

## **Policies - General**

**House Opening:** The house opens no less than thirty (30) minutes prior to scheduled show time. All set-up and sound checks must be completed by this time. House Manager approval must be obtained before starting or resuming a performance.

Typical curtain times in Portland are between 7pm – 8pm for evening shows, and 2pm for matinees.

**Personnel Access:** The visiting company will provide identification and/or complete lists of all persons to be allowed in the backstage area. This list must be provided a minimum of 48 hours prior to the beginning of the load-in and is subject to approval by the Production Department. Portland's reserves the right to restrict backstage access. All persons must sign in or show identification at the stage door.

**Fire Exits:** The visiting company will not obstruct any portion of the entries, hallways, elevators, stairs, or other egress, including access to all building utilities.

**Signs and Decorations:** Signs or decorations will not be placed in any rooms, hallways, lobbies or theaters in the Portland's buildings without the permission of the Event and Production Services Department. Damage may result in additional charges.

No sign or decoration is allowed on the building exterior or sidewalk, unless approved in advance by the Event and Production Services Department.

**Smoking:** Per Oregon State law and Metro policy, smoking and vaping are not permitted inside any Portland's venue, or within 25 feet of any exterior doorway or air intake. Theatrical use guidelines are listed in the **Smoking on Stage** section below.

**Alcohol:** All alcohol backstage must be provided and served by an OLCC licensed and permitted entity, approved and coordinated in advance with Production Department. Alcohol brought into the building by individual performers, cast or crew is prohibited.

**Catering:** Back of House - Clients may bring any caterer of their choosing in for backstage catering. All catering details to be advanced through the Production Department. A facility maintenance fee applies per event for this service.

Front of House- Levy is the exclusive Front of House caterer and concessionaire in all Portland's venues.

**Animals:** Only service animals are allowed in Portland's buildings. Use of animals in a production or related promotional event requires approval by the Production Department prior to load-in.



**Security:** Portland’5 reserves the right to determine the need for and engage uniformed (MERC) or non-uniformed (PEER) security personnel for each event, including FOH, exterior, onstage and backstage areas.

**Firearms:** Firearms are not permitted in public buildings except under limited circumstances including possession of a concealed weapons permit. While Portland’5 cannot ban those with concealed weapons permits from carrying firearms into a public building, the event Licensee, as a private entity, may choose to ban any weapons from the premises.

## **Policies - Production**

**Pre-Production Coordination:** All advance work between the visiting company and Portland’5 Stagehand Department Heads will be done through the Production Supervisors.

**Stage Labor:** The Portland’5 Production Department reserves the right to determine the number and type of stage labor required for the event. All stage labor personnel are subject to the approval of the Production Department.

**Seat Kills:** Seat kills for production control equipment must be approved in advance by the Production & Ticket Services Departments. The use and ticketing of pit seats must be approved in advance by the Production & Ticket Services Departments.

**Rigging Changes and Flying Effects:** Any changes to house rigging or equipment, including flying effects, must be approved in advance by the Production Department.

**Sound Level Limitations:** Portland’5 Event and Production Services Department reserves the right to determine the maximum sound level for any event. Maximum dB level before incurring premium rates for stagehand labor is 112dB.

**Holes and Attachments:** The visiting company will not use any tape, or make holes, drive nails, tacks, stage screws or similar articles in any part of the premises without approval by the Production Department.

**Valuables:** Locking drawers are available in each dressing room. Keys may be signed out by the Stage Manager or other representative. No additional locks will be permitted on any door of the premises. It is recommended that valuables be collected by the visiting company’s Stage Manager prior to the performance and kept until the performance is completed. Portland’5 assumes no responsibility for valuables or personal property left in dressing rooms.

**Fire, Flame, and Pyrotechnics:** All use of fire, flame, and pyrotechnics must be approved in advance by the Production Department, the City of Portland Fire Marshal, and, when appropriate, the State of Oregon Fire Marshal. This includes the use of candles, incense, lighters, torches of any kind, flash paper, etc. Visiting companies must be prepared to demonstrate effects to the Fire Marshal prior to approval. A Conditional Use Permit, which takes a minimum of three weeks to process, is required. All permit fees will be charged at the applicable rates.

**Atmospherics, Strobes, and Sound Effects:** The use of any special effects which may affect audience comfort or safety such as the use of lasers, strobe lights, haze, smoke effects, or gunshot sounds must be approved in advance by the Event and Production Services Department. Portland's reserves the right to limit or prohibit the use of effects which may constitute a hazard to patrons, employees or the facility.

**Smoking on Stage:** The State of Oregon prohibits the smoking of all tobacco products on stage. This ban includes vaping. Performers are allowed to smoke or carry a lighted smoking instrument that does not contain tobacco in scripted stage, motion picture, or television productions if smoking is an integral part of the production. A Conditional Use Permit, which can be coordinated through the Production Department, is required.

**Weapons:** Stage-use weapons with appropriate safety features may be permitted, only with prior approval by the Event and Production Services Department. A Conditional Use Permit may be required.

**All OSHA Regulations, Manufacturer's Specifications, and Theatrical Safety best practices must be followed in Portland's venues.**